

**GET EXCLUSIVE
MIDWAY EXTRAS!**

REGISTER YOUR GAME ONLINE AT

REGISTER.MIDWAY.COM

ENTER YOUR GAME ACCESS CODE

AND RECEIVE ONE OF THESE

EXCLUSIVE ITEMS:

- HINTS
- CHEAT CODES
- WALLPAPERS

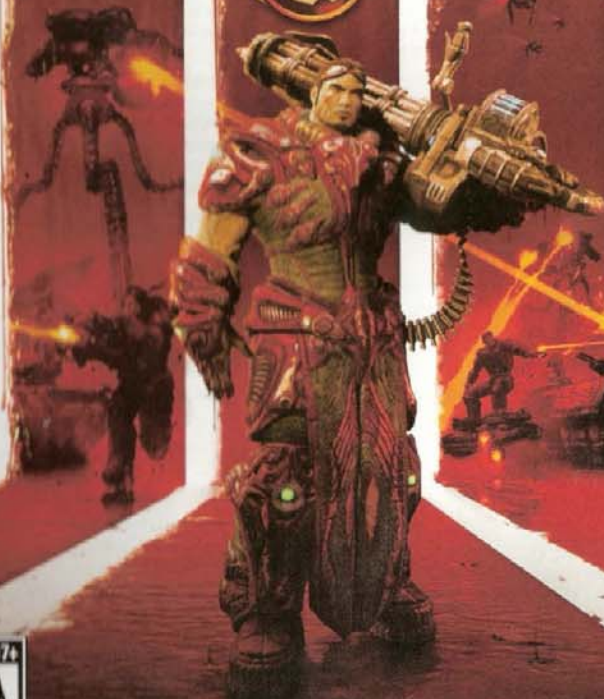
GAME ACCESS CODE:



XBOX 360

SAN DIEGO COUNTY LIBRARY
043760485

Unreal TOURNAMENT



MIDWAY

⚠ WARNING Before playing this game, read the Xbox 360 Instruction Manual and any peripheral manuals for important safety and health information. Keep all manuals for future reference. For replacement manuals, see www.xbox.com/support or call Xbox Customer Support.

Important Health Warning About Playing Video Games

Photosensitive Seizures

A very small percentage of people may experience a seizure when exposed to certain visual images, including flashing lights or patterns that may appear in video games. Even people who have no history of seizures or epilepsy may have an undiagnosed condition that can cause these "photosensitive epileptic seizures" while watching video games.

These seizures may have a variety of symptoms, including lightheadedness, altered vision, eye or face twitching, jerking or shaking of arms or legs, disorientation, confusion, or momentary loss of awareness. Seizures may also cause loss of consciousness or convulsions that can lead to injury from falling down or striking nearby objects.

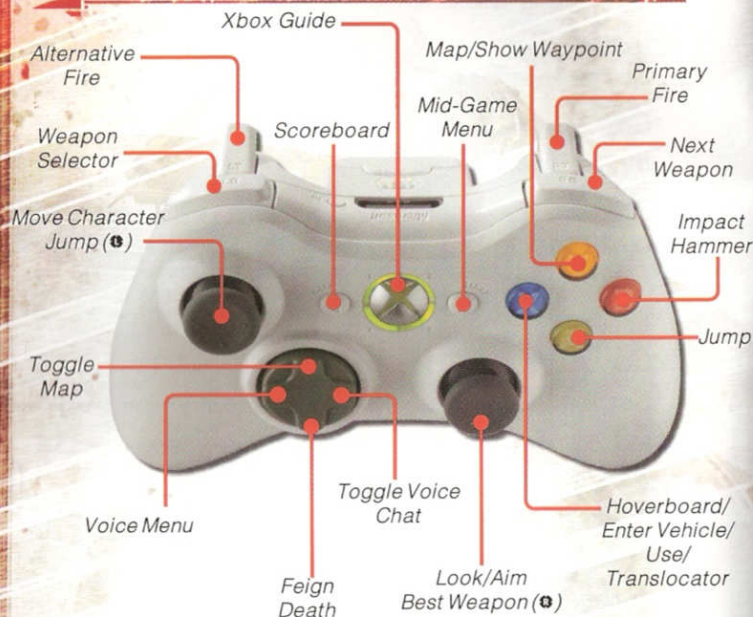
Immediately stop playing and consult a doctor if you experience any of these symptoms. Parents should watch for or ask their children about the above symptoms—children and teenagers are more likely than adults to experience these seizures. The risk of photosensitive epileptic seizures may be reduced by taking the following precautions: Sit farther from the screen; use a smaller screen; play in a well-lit room; and do not play when you are drowsy or fatigued.

If you or any of your relatives have a history of seizures or epilepsy, consult a doctor before playing.

Table of Contents

<i>Controls</i>	3
<i>Single Player</i>	4
<i>Campaign</i>	4
<i>Instant Action</i>	4
<i>Xbox LIVE®</i>	5
<i>Join Game</i>	6
<i>Host Game</i>	6 - 7
<i>Community & Settings</i>	8
<i>Community</i>	8
<i>Settings</i>	8 - 11
<i>Splitscreen</i>	12
<i>Deathmatch HUD</i>	13
<i>Team Deathmatch HUD</i>	14
<i>Duel HUD</i>	14
<i>Capture the Flag HUD</i>	15
<i>Vehicle Capture the Flag HUD</i>	16
<i>Warfare</i>	17 - 19
<i>Warfare HUD</i>	20
<i>Unreal Characters</i>	21 - 23
<i>Weapons</i>	24 - 27
<i>Vehicles</i>	28 - 32
<i>Pickups</i>	33
<i>Powerups</i>	34
<i>Deployables</i>	35
<i>Credits</i>	36 - 39
<i>Notes</i>	40 - 41
<i>Warranty</i>	42

Controls



Weapon Selector

Hold **↑** to display the Weapon Selector, then use right thumbstick to select a weapon.

Single Player

Campaign

Unreal Tournament 3 features a compelling single player experience that follows the adventures of Ronin, a team of mercenaries out for revenge on those who destroyed their home colony.

After selecting Campaign from the Main Menu, select **New Campaign** to start a new game or **Join Game** to join a Co-Op game. After starting a new game, two additional options become available. To continue a Campaign game you've already started, select **Continue Campaign**. The **Replay Chapter** option will allow the player to start over at one of the five Chapter points after being unlocked. Doing so will reset all progress to the beginning of the selected Chapter.

When starting a new Campaign game, you'll choose whether the game will be Single Player, System Link, Xbox LIVE® Private or Xbox LIVE Public. Single Player means you will be the only player, while System Link, Xbox LIVE Private and Xbox LIVE public allow you to play with up to three others. You can also enable Splitscreen if you'd like to play with another person on the same Xbox 360® console. The Skill allows you to choose the Skill of the Bot opponents you'll play against.

When Joining a Co-Op campaign you are given the option to enable Splitscreen to allow two players to use the same Xbox 360 console. Additionally, you can search for Co-Op games over System Link or Xbox LIVE Player Matches.

While playing through the Single Player campaign, certain in-game objectives will award you **Cards**. These Cards can be played before a mission to tweak the rules of the game. Some will give your team additional reinforcements; others will hurt your opponents. While many Cards can be kept for use later, some must be used in the mission immediately following the one they were awarded in.

Instant Action

Jump right into the action against advanced, computer-controlled Bots.

Deathmatch

Players are pitted against each other in a balls-to-the-wall free-for-all. Anything goes. The one with the most kills wins.

Team Deathmatch

Join your teammates in the quest for battlefield supremacy. The team that kills the most enemy players is judged the winner.

Capture the Flag

This is team-based capture the flag. Invade the opposing team's base, grab their flag and bring it back to your own base to obtain glory.

Vehicle Capture the Flag

This is team-based capture the flag with vehicles. Invade the opposing team's base, grab their flag and bring it back to your own base to obtain glory.

Warfare

Link together Nodes and destroy the enemy Core in this team-based mode. See Warfare section, pgs. 17-20.

Duel

This is a one-versus-one test of Deathmatch skill. Whoever wins the round will take on the next spectator watching the carnage!

Xbox LIVE

Play anyone and everyone, anytime, anywhere on Xbox LIVE. Build your profile (your gamer card). Chat with your friends. Download content at Xbox LIVE Marketplace. Get connected and join the revolution.

Connecting

Before you can use Xbox LIVE, connect your Xbox 360® to a high-speed Internet connection and sign up to become an Xbox LIVE member. For more information about connecting, and to determine whether Xbox LIVE is available in your region, go to www.xbox.com/live.

Family Settings

These easy and flexible tools enable parents and caregivers to decide which games young game players can access based on the content rating. For more information, go to www.xbox.com/familysettings.

Network Problems

If when attempting to host or join an Xbox LIVE match you receive a connection error, it is often caused by a home router or firewall. You can try the following to alleviate this problem:

1. In your router/firewall settings enable port triggering on port 3074 for both TCP/IP and UDP.
2. In your router/firewall settings set up port forwarding to forward port 3074 (both TCP/IP and UDP) to the IP of your Xbox 360. This works best if your Xbox 360 has a static IP address.

If you continue to have problems please contact your router/firewall manufacturer or your internet service provider for assistance.

Signing In

To access Xbox LIVE, sign in with a LIVE-enabled gamer profile, and select Multiplayer from the Main Menu.

For more enhanced guides, tips and tricks, check out the numerous fan sites online or written publications that cover UT3.

Here are a few other useful links to explore:

www.unrealtournament3.com (official site of Unreal Tournament 3)
www.planetunreal.com

Quick Match

Quick Match will find the game session in progress that best represents the options you select. Choose from the following options:

Splitscreen: Enables or disables splitscreen (requires two signed-in gamer profiles). Ranked Match multiplayer is not available if splitscreen is enabled.

Match Type: For local play, choose System Link. For Xbox LIVE, a Player Match allows a gamer of any skill to play in any unranked match. For Xbox LIVE, Ranked Match players are automatically entered into matches with players of a similar skill. Playing Ranked Matches over time will raise or lower a player's skill.

Game Mode: Choose to search for DM, TDM, CTF, VCTF, Warfare or Duel matches.

Pure Server: Pure servers have no rules-changing Mutators enabled. Select Yes for matches with no mutators, select No for matches that only have mutators enabled, or select Any for no preference.

Custom Match

Custom Match allows you to find a server that best fits your search criteria. Choose from the following options:

Splitscreen: Enables or disables splitscreen (requires two signed-in gamer profiles). Ranked Match multiplayer is not available if splitscreen is enabled.

Match Type: See Match Type under Quick Match (above) for details.

Game Mode: Choose to search for DM, TDM, CTF, VCTF, Warfare or Duel matches.

Pure Server: Pure servers have no rules-changing Mutators enabled. Select Yes for matches with no mutators, select No for matches that only have mutators enabled, or select Any for no preference.

Servers

When you select begin your search for a match, a list of available games will be displayed. Highlight a server then press **Y** to view the host's Gamer Card. When you've found a server you'd like to join, press **A** to Join and connect. Press **X** to Refresh and update the list of servers.

Host Match

Host Match allows you to set up a multiplayer match that other players can join. After selecting Host Game, you set the Game Mode you'd like your server to use. You can select from Deathmatch, Team Deathmatch, Capture the Flag, Vehicle Capture the Flag, Warfare and Duel. Once you've made your choice press **A** to select Next and view the Map options.

Map Options

The Map screen allows you to select which map you'd like your server to use. The list is restricted to the Game Mode you chose, and the recommended player counts are displayed under the Map preview image. If you'd like to set up a rotation of maps, press **X** to configure which maps you'd like the server to use. Once the Maps you'd like your server to use are chosen, press **A** to select Next and view the Server options.

Multiplayer

Server Options

The Server screen gives you options to choose a Match Type: Player, Ranked or System Link. Use the Server Type option to choose whether or not to use a dedicated server. Max Players allows you to select the maximum number of players permitted on the server, while Min Players determines the minimum players necessary for the match to begin. The Private Slots option allows you to reserve a certain number of slots for players you want to invite. Press **A** to select Next and view the Settings options.

Settings

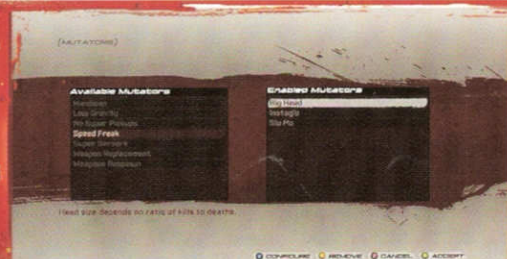
At the Settings menu, the Splitscreen feature can be turned On or Off. You can also decide how advanced Bots perform in battle by adjusting the Bot Skill Level. Bot Combatants allows you to enable or disable computer opponents. Bots will leave the server as human players join the server and rejoin as human players leave. The Goal Score option allows you to set the score limit for a single game round, and the Time Limit allows you to set the amount of time a single round will last. Set the Force Respawn option to Yes to force fragged players to automatically respawn.

For team games, additional options become available. In addition to enabling computer opponents, the Bot Combatants setting in team games allow you to adjust the ratio of Combatants per team. Select Players vs Bots 1:1, 1:2 and 2:3 to set up an uneven number of combatants per team. Opposing Bot Faction allows you to configure the character models that the opposing will use to those of a single team. Press **B** to start the game.

Mutators

Mutators dramatically change the rules of the game from enabling low gravity for immense jumps and aerial battles to speeding up weapon's fire and many others. As you highlight a Mutator, descriptions appear at the bottom of the screen. Highlight a Mutator, then press **Y** to add it to the Enable Mutators list. When you highlight an enabled Mutator, press **Y** again to Remove it, or press **X** to Configure the highlighted Mutator.

(Note: Only Weapon Replacement Mutator is configurable).



Community & Settings

Community

Downloadable Content

Use this option regularly to check for downloadable content. A list of already downloaded content will also be displayed.

Leaderboards

This option allows you to view the stats for players within the community. You can sort the Leaderboards information by Game Mode and use View Filters to limit the statistics returned to just the information you want.

Achievements

Achievements attached to your profile can be viewed using this option.

Gears of War® 2 Trailer

This is a behind the scenes look at the making of Gears of War 2, coming soon to the Xbox 360 console!

Settings

VIDEO

Brightness

Use this option to modify the brightness of the screen.

Post Processing

Choose from the three available options (Muted, Vivid, Intense or Default) for the type of post processing that works best for you.

Gore Level

UT3 is a mature title with over-the-top blood and gore effects. Use this setting to reduce the game's gore level.

Subtitles

Enable or Disable on-screen subtitles.



Settings

AUDIO

SFX Volume

Control the volume level of sound effects in the game.

Music Volume

Control the volume level of music in the game.

Voice Volume

Control the volume level of voice in the game.

Ambience Volume

Control the volume level of ambient sounds in the game.

Announcer Volume

Adjust the volume level of the game announcer voice.

Announcer Type

Control the amount of Announcements in the game. Choose from three available options, Full, Minimal and Off.

Automatic Taunts

Enable or disable whether you'd like your Taunts to be automatic.

INPUT

Controller Vibration

Turn your controller's vibration feature On or Off.

Invert Y

Invert your up and down view. When enabled, thumbstick up will make you look down and vice versa.

Controller Sensitivity

Adjust the sensitivity of your controller's look and movement controls.

Turn Acceleration

Adjust the amount of acceleration that is added when you're turning.

Look Centering (Walking)

With the Look Centering (Walking) option turned On, your view will gradually return to the center while you're walking.

Look Centering (Vehicle)

With the Look Centering (Vehicle) option turned On, your view will gradually return to the center while you're moving in a vehicle.

Vehicle Controls

The Relative option uses "Look to Steer" for all wheeled vehicles. The Mixed option will use it for some vehicles, and the Direct option uses direct stick input for all vehicles.

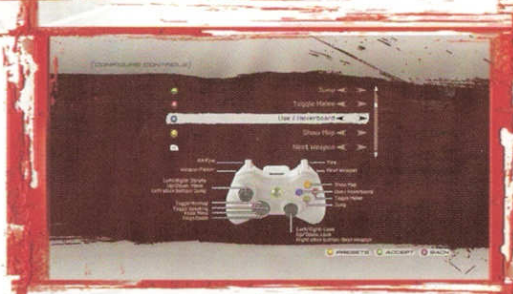
Settings

Xbox 360 Controller

This option allows you to select from preset controller configurations. Simply highlight a (left/right) stick or Button Preset, then press the D-pad \leftarrow or \rightarrow . Repeat this process until you're satisfied with the new configuration.

Customize

This option allows you to customize your controller the way you like. At the Configure Controls screen, press \mathbf{Y} to access the custom option. Highlight a control, then press the D-pad \leftarrow or \rightarrow to cycle the controls available for that button. Repeat this process until you have configured the controller the way you want. Press \mathbf{Y} to reset the controls to their default Presets.



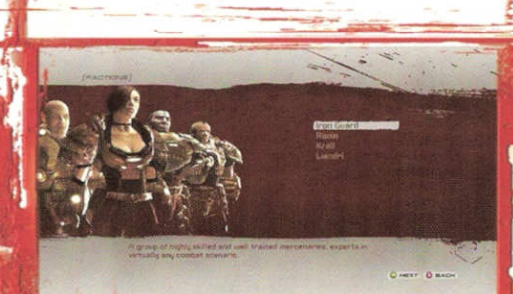
PLAYER

Faction

Choose a Faction: Iron Guard, Ronin, Krall, Liandri or Necris (once unlocked).

Character

Within that Faction, you'll next have a list of Characters to choose from.



Settings

WEAPONS

Crosshair Type

The Normal setting is the unique crosshair that is applied to each weapon. The Simple crosshair option displays the same crosshair for all weapons. Hidden Crosshairs will display no crosshair in-game.

Weapon Switch on Pickup

By default, you'll switch to the best weapon you pick up. This option allows you to disable the automatic switch and keep the current weapon.

Weapon Hand

Decide where the currently equipped weapon is displayed. Select Hidden to display no first person weapon at all.

Small Weapons

Toggle whether to display a smaller version of your weapon in hand.

Weapon Priority

Press **Y** to select Weapon Priority from the Weapons Setting screen to alter the behavior of Weapon Switch on Pickup option. Weapons lower in priority than others will not automatically be switched to until the higher priority weapons are exhausted of ammunition. Highlight the weapon whose priority you'd like to adjust and press **LB** or **RB** to shift its position in the Queue. Press **RT** to select Defaults and reset the priority.



HUD (HEADS UP DISPLAY)

Zoomed Minimap

Toggle whether or not to default to a zoomed-in rotating minimap.

Show Map

Toggle whether or not to display the map.

Show Clock

Toggle whether or not to display the match clock.

Show Scoring

Toggle whether or not to display the current match score.

Show Leaderboard

Toggle whether or not to display the leaderboard.

CREDITS

View the names of those who worked long hours to bring you UT3.

Splitscreen



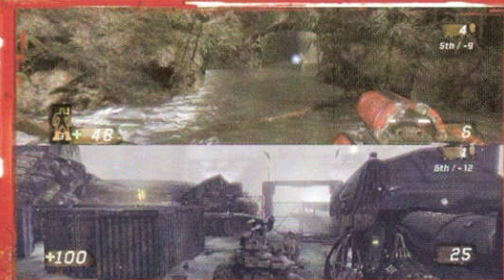
Jump into the fully-featured, two-player splitscreen action, competitively or cooperatively, in both System Link and Xbox LIVE.

System Link

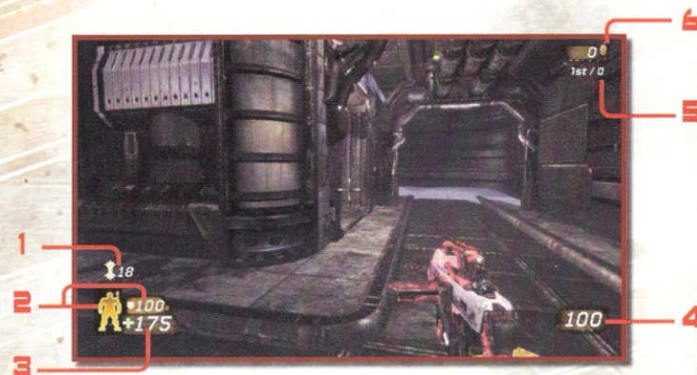
To play a System Link game, both players must create or sign into any gamer profile (Xbox LIVE account not required). The game will then provide the Splitscreen option under the Options tab when preparing to launch a session in Campaign, Instant Action or Multiplayer. For even more carnage, Splitscreen players can also join multiple Xbox 360's through System Link.

Xbox LIVE

Sign into an Xbox LIVE Gold account to play on Xbox LIVE. A second player may join as player one's guest from the Multiplayer menu or sign in a separate Xbox LIVE Gold account. The game will then provide the Splitscreen option under the Options tab when preparing to launch a session. Online splitscreen players can join a Player Match from the Multiplayer menu or online Campaign sessions.



Deathmatch HUD



1. Powerup/Powerup Time

These icons and timers represent each active powerup you have acquired.

2. Armor/Armor Value

Your Armor Value is displayed as a number. Various pickups and powerups are shown as active on the paper doll to the left of the number.

3. Health

Your Health counts down from 100 as you take damage. You can have a Health value higher than 100 if you pick up a Health Vial or Keg O Health.

4. Ammunition

This displays your weapon's available Ammunition.

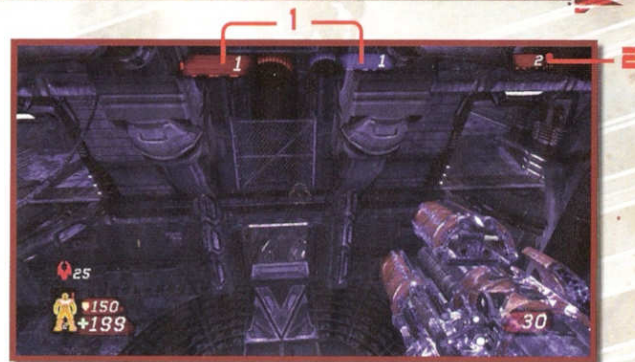
5. Rank

Your Rank (1st, 2nd, etc.) is displayed, as well as where you rank in regards to first place. For example, "1st / +3" would indicate that you're in first place by three frags.

6. Frags

This is your Frag count.

Team Deathmatch HUD



The Team Deathmatch HUD displays mostly the same information as the standard Deathmatch HUD, other than these two elements.

1. Team Scores

Blue and Red team scores are shown.

2. Frags

This displays your kill contribution to the team.

Duel HUD

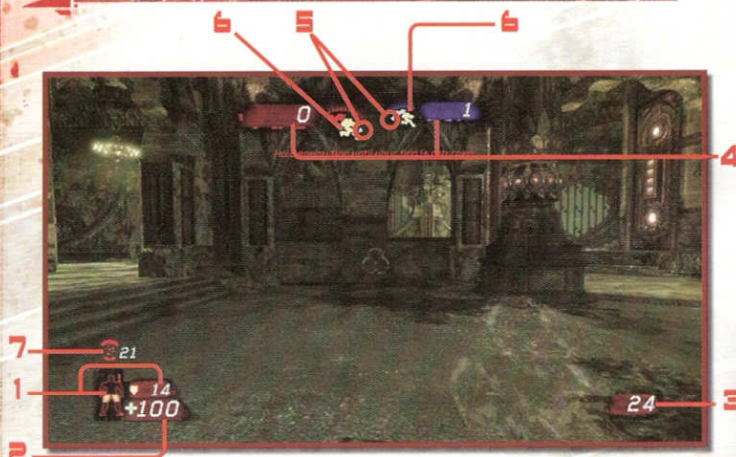
The Duel HUD is the same as the Team Deathmatch HUD, but the scoring is different and the current dueling player names are displayed.

1. Frags

This displays scores for both combatants.



Capture the Flag HUD



1. Armor/Armor Value

Your Armor Value is displayed as a number. Various pickups and powerups are shown as active on the paper doll to the left of the number.

2. Health

Your Health counts down from 100 as you take damage. You can have a Health value higher than 100 if you pick up a Health Vial or Keg O Health.

3. Ammunition

This displays your weapon's available Ammunition.

4. Captured Flags

The number of Red and Blue team captured flags is displayed.

5. Flag Base Directional Indicators

White arrows point the way to each team's flag base.

6. Flag Status

This displays an icon indicating both teams' flag status. There are icons for Secure, Taken and Dropped.

7. Powerup/Powerup Time

These icons and timers represent each active powerup you have acquired.

Vehicle CTF HUD



The Vehicle Capture the Flag (VCTF) HUD displays mostly the same information as the standard CTF HUD, other than the Mini-Map.

1. Flag Taken

This icon indicates that the flag has been captured and is en route to the opponent's base.

2. Flag on the Move

When captured, your flag icon will move across the map keeping you abreast of its location.

3. Flag in Place

The flag is safe at the base.

This all-new game mode is a strategic, moving-battlefront team game. The object is to destroy the enemy's Power Core by linking to it through control points called Nodes. Once a link is established the enemy Power Core's shield drops and it becomes vulnerable to an attack.

Objective

The objective is to destroy the enemy's Power Core by reducing its 100 percent Health to 0. It's Red vs. Blue, and the clock is counting down.



Power Cores

Power Cores are found in each team's base. They start at 100 percent Health and cannot be repaired. At the start of a match, you can see the shield protecting the Power Core. That shield will drop, however, if the enemy successfully controls a series of Nodes leading up to your Prime Node. Once the Prime Node falls, your Power Core will become vulnerable to an attack. Make sure to defend the Power Core at all costs! If you are able to retake the Prime Node, the shielding will return. Once a Power Core reaches zero Health, the match is over. Should a game reach overtime, the Power Cores will start to drain.

Nodes

Controlling Nodes gives that team access to potential turrets, new vehicles and new spawn points. Controlling Nodes (in order) all the way up to the enemy's base will make their Power Core vulnerable to attack. The more Nodes controlled during overtime, the faster the enemy core will drain. Some Nodes, while not critical in linking to the enemy Power Core, often give access to special vehicles that can turn the tide during the battle. Listen to the announcer and check the mini-map for which Nodes are vulnerable to attack, and proceed there with haste! You may only capture Nodes that are adjacent and linkable from your Power Core or other friendly controlled Nodes. Don't attack any unlinked Nodes, because they will be shielded to protect them from damage.

Nodes (cont.)

You can capture a neutral Node by running over its base to change it to your team's color. You'll see it begin to construct as the energy bar increases and plating materializes. It's very important to help the process along by using your Link Gun's alternative fire to speed up the construction. Multiple people using their Link Guns to construct a node will increase the rate at which it's built. A damaged Node can also be healed in this manner. Once the Node reaches full Health, it will be briefly shielded from enemy capture.

When attacking an enemy Node, make sure the shields have been dropped and no enemy Orb runner is nearby. Fire at it until all the energy drains and the plating has been blown off. It will return to a neutral state and allow either side to recapture it. Guard your Nodes! Attack the enemy Nodes!

Special Nodes

Some Warfare Maps include special nodes. There are Countdown Nodes that deal large amounts of damage to the enemy core by launching missiles or releasing floodwaters. Another node will lower a bridge for vehicle entry into the enemy base.



Orbs

The primary use of an Orb is the 100% instantaneous capture of a linked neutral or enemy Node. This will dramatically change the battlefield and allow even a losing team to make a comeback!

Orbs (cont.)

Each team starts with one respawnable Power Orb in their base. Take the Orb to become your team's Orb runner. But be careful, though, you'll be a prime target so bring backup! When carrying an Orb, you may not use any vehicles. You must carry the Orb on foot or on your hoverboard.

Holding an Orb in proximity to a friendly Node constantly heals and shields it from enemy attack. You'll have to deal with any enemy Orb runner before taking down their Node so keep a close watch.

If you hear an announcement of incoming enemy Orb runners, destroy them at all costs or you may lose the Node. If you see an enemy Orb dropped, run up to it and press **X** to sacrifice yourself and destroy it. It's good for those last second saves!

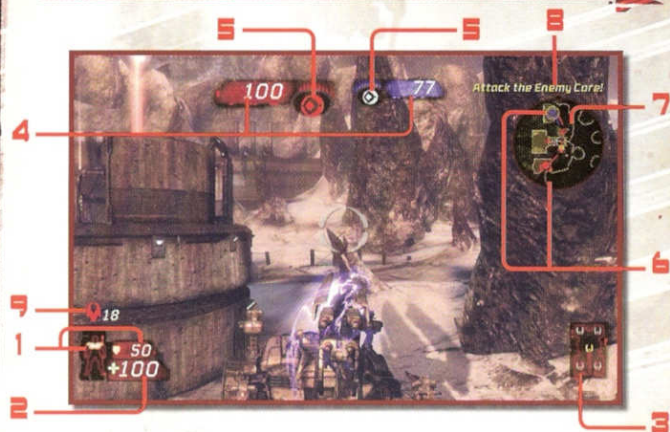


Vehicles

The organic-styled Necris and traditional Axon vehicles (depending on the map) are scattered around the map near bases and Nodes. Try capturing the non-critical Nodes to bring additional vehicles into the fight. Some vehicles such as the menacing, tripod Darkwalker support more than one player, so try to jump in and join the fight by running up to a vehicle and pressing **X** to take the gunner's position.

Hoverboard

Every player in a Warfare match can press **X** to gain access to a Hoverboard. See 'Hoverboard', pg. 27, for more details.



1. Armor/Armor Value

Your Armor Value is displayed as a number. Various pickups and powerups are shown as active on the paper doll to the left of the number.

2. Health

Your Health counts down from 100 as you take damage. You can have a Health value higher than 100 if you pick up a Health Vial or Keg O Health.

3. Vehicle Armor

This displays your vehicle's current Armor status.

4. Power Core Status

This shows the current health of the Power Cores.

5. Orb Status

This icon shows that the Orb has spawned and is ready to be taken.

6. Red and Blue Base Locations

7. Node Status

This icon represents one of the Nodes on the map and shows its status: Neutral, Converting, Friendly, Enemy and/or Locked.

8. Current Suggested Objective

Along with a flashing yellow marquee around a Node or Core, a suggested objective will be announced and displayed in text on-screen.

9. Powerup/Powerup Time

These icons and timers represent each active powerup you have acquired.

Unreal Characters

Team: Ronin

Full name: James "Reaper" Hawkins

Birthplace: Twin Souls mining colony, Cox Nebula

Reaper was born into a hardworking mining family in the Twin Souls clan. Four years ago, his only sister joined the Fist of the Twin Souls – the security forces charged with protecting the clan. After a dangerous skirmish left her injured, Reaper left the mines and joined the Fist in order to watch for her safety. His agile handling of the drills translated to able marksmanship, and his keen intellect gave him a grasp on three dimensional combat tactics that many lack.

Reaper



Team: Ronin

Full Name: Sarah "Jester" Hawkins

Birthplace: Twin Souls mining colony, Cox Nebula

Jester was born into a hardworking mining family in the Twin Souls clan. She never showed much aptitude for mining; her capricious, happy-go-lucky attitude was not a fit for the dangerous, methodical lifestyle of a miner. Instead, she chose an even more dangerous route by joining the Fist of the Twin Souls – the security forces charged with protecting the clan's interests at the colony and abroad. Her acrobatics in combat, not to mention her carefree approach, left her with the nickname "Jester".

Jester



Team: Ronin

Full Name: Terrence "Othello" Marshall

Birthplace: White Plains, New York

Othello was born into a family of means, and never had to work to support himself. Instead, he challenged himself with the most deadly jobs and in adrenaline-fueled adventures around the galaxy – climbing the ice floes of Mt. Karanish, participation in the Liandri Grand Tournament, even mercenary work in against-all-odds military conflicts. Othello became a drifter, floating from colony to colony, feeding his needs as a street brawler and soldier for hire. A series of unfortunate coincidences made him a first-hand witness to the Twin Souls Massacre.

Othello



Unreal Characters

Bishop

Team: Ronin

Full Name: Jeremiah "Bishop" O'Connor

Birthplace: Deep Space aboard Grist, his parents' cargo transport.

Bishop considers himself a Crusader, a Knight Templar on a mission from god. Those falling outside of his close circle of friends, or worse, those serving on an opposing force in a battle, are subject to his brand of divine justice. No church would ever sanction his methods. His tactics usually fall just within the limits of legality and wartime treaty convention, but they never fit well within a civilized society or regular army. Thus Bishop found himself on the fringes of known space, serving as a mercenary by day and an exceedingly unpopular army chaplain by night.



Malcolm



Team: Thundercrash

Birthplace: Earth

During the off-season, Tournament stars and team captains are often recruited by the major corporations to serve as consultants for training or leading their paramilitary security forces. With so much at stake on planet Taryd, the Izanagi Corporation made a massive investment, recruiting tournament champion Malcolm as commander of their security forces. Malcolm is a true survivor and born leader, a nine-time champion whose face is recognized on every planet in the galaxy.

Lauren



Team: Iron Guard

Birthplace: Unknown

Lauren is fierce, loyal, and technically capable, but is best known for her incredible reflexes. Born into a poor asteroid miner family, she became notorious by stealthily eradicating her parents' competitors in space before becoming a full time Tournament warrior. Lauren currently leads the Axon sponsored Iron Guard team. She is a well-respected superstar, but is tough and no-nonsense in her approach.

Unreal Characters

Team: Black Legion
Birthplace: Unknown

The secretive Phayder Corporation developed the Necris treatment process to produce an elite group of "undead" assassins. The Necris process itself has no spiritual component, but those who have undergone the treatment have built up a religion based on this transformation. Over time, the Necris religion has become an important part of the Corporation's driving principles. Akasha is a Necris High Inquisitor, a ruthless leader who has ordered countless massacres.

Akasha



Matrix

Team: Liandri
Birthplace: Unknown

Matrix leads a team of combat modified versions of the Liandri Mining Corporation's world-class security drones. The Liandri Corporation has developed large numbers of both robots and automatons. To date, they refuse to divulge whether Matrix is entirely artificial, or a highly enhanced and modified human. There are strong arguments from each camp, but everyone agrees that Matrix is a fearsome opponent.



Scythe

Team: Krall
Birthplace: Somewhere in Skaarj Empire

The Krall are a fierce reptilian species used by the Skaarj for pacification of newly conquered planets. It is a testament to their fighting skills that the Skaarj use them as warriors rather than slaves. The Krall social structure is too fragmented for them to become a major force on a large scale, but as individual fighters they are truly formidable. Scythe is notoriously vicious, and controls his tribe by tooth and claw. His underlings fear rather than respect him.



Weapons

Impact Hammer



Originally designed for sub-surface drift mining, this weapon can focus several hundred metric tons of pressure into the space of a few square centimeters. The impact, and resulting shock wave, easily destabilizes solid stone to speed ore separation and excavation. After several mining accidents highlighted the Hammer's devastating effect on the human body, the N.E.G. military took interest.

To improve the Hammer's effectiveness against vehicles with shock-absorbing armor, an alternate electromagnetic pulse (EMP) mode was added. The EMP violently scrambles onboard computer systems, quickly leading to engine failure. Field testing showed the EMP has a similar effect on infantry powerups, knocking them off soldiers and enabling battlefield recovery.

Enforcer



Ammo

For decades, the Enforcer pistol was the combat sidearm of choice. Veteran soldiers appreciated the lightweight handgun's power, accuracy and balance. In recent years, the ever-burning desire for greater firepower led to general issue of the AR770 assault rifle. Military procurement officers were drawn to the AR770's higher cyclic rate and underslung M355 grenade launcher, but seasoned combatants missed the dependability of the Enforcer. Axon Research listened to the soldiers, and their new Enforcer MP ("Machine Pistol") model provides the best of both worlds.

Side-fed magazines provide greater capacity, while balancing the shooter's aim when wielding two pistols. With a deadly accurate semi-automatic mode, and a selectable burst fire mode, the Enforcer is back, and the modern battlefield will never be the same.

Bio Rifle



Ammo

The GES BioRifle processes Tarydium from its stable crystalline form into a reactive mutagenic sludge. It can rapidly disperse these toxins for wide-area coverage, or fire a virulent payload of variable, but usually lethal, capacity. In layman's terms, this means the BioRifle can pepper an area with small globs of biosludge, or launch one noxious glob at the target. The BioRifle's ability to carpet an area with a toxic minefield makes it a notoriously effective defensive weapon.

Shock Rifle



Ammo

The ASMD Shock Rifle has changed little since its first incorporation into the Liandri Tournament. The ASMD sports two firing modes: a thin photon beam and a sphere of unstable plasma energy. These modes are each deadly in their own right, but used together they can neutralize opponents in a devastating shockwave. The energy spheres can be detonated with the photon beam, releasing the explosive energy of the anti-photon in the plasma's EM containment field.

Weapons

Link Gun



Ammo

Contact with a friendly target switches to a harmless carrier stream, offloading energy from the onboard cells to the target. This boosts the output of any teammate who is linked to the rifle – hence its nickname, the “Link Gun”.

Stinger Minigun



Ammo

Replacing the Minigun in this year's Tournament, the “Stinger” is actually a Liandri mining tool converted into military service. The Stinger fires shards of unprocessed Tarydium crystal at an alarming rate, raking opponents with a storm of deadly needles. The alternate fire shoots larger hunks of crystal that can knock back an opponent, sometimes even pinning them to walls.

Flak Cannon



Ammo

Trident Defensive Technologies continues to tweak and refine the flak cannon with their newly released Mk4 “Peacekeeper.” In spite of its new name, the Flak Cannon remains banned from most military conflicts for high incidences of maiming and collateral damage. Still, the Flak Cannon is the weapon of choice for unconventional warfare in urban terrain. The cannon lobbs an explosive flak shell that detonates on contact, sending shrapnel in a dangerously wide and unpredictable radius. The alternative mode actually detonates the shell in the barrel, launching shrapnel forward in a deadly shotgun pattern but often deafening the operator.

Rocket Launcher



Ammo

Each year, more accidental deaths are caused by the Trident Tri-barrel Rocket Launcher than in vehicular accidents and extreme sports combined. The kill radius for its standard dumbfire rocket is surprisingly high by design – so accidentally firing upon a nearby wall, or a nearby enemy soldier, can be quite fatal for the operator. The alternate fire adds to this suicidal lethality by loading and firing up to three rockets at once, in a spread, tight spiral, or lobbed like grenades. Regardless of the grim statistics, veteran soldiers still consider the ‘old 8 ball’ the most expedient way to put explosive ordnance on target.

Weapons

Sniper Rifle



Ammo

The venerable Axon Research long-range target interdiction rifle is the weapon of choice for the discerning sniper. Acquisition of a target at distance requires a steady hand, but the rewards merit the effort – the high-caliber round is lethal at any range. With a precise headshot, the target will be neutralized by the super-sonic bullet long before they hear the report. As they say in the N.E.G. Marines – “any shot you hear is nothing to be worried about.”

Longbow AVRIL



Ammo

The Longbow Anti-Vehicle Rocket Launcher, a.k.a. the “AVRIL”, gives dismounted infantry a fighting chance in an armored conflict. Its solid fuel missile can be “dumbfired” as an unguided rocket, but the AVRIL's famed kill percentages come from its optical tracking system. The alternate fire zooms and locks on to a vehicle, guiding the missile towards its target at inescapable speeds.

The missile's microdappled control planes use increased surface area to give unprecedented turning radius, guaranteeing delivery of its shaped PolyDiChlorite charge into all but the most nimble vehicles. The AVRIL is notoriously slow to reload, so it should be employed with caution in a pitched battle. Note, the Longbow's targeting laser is standardized for most Axon military equipment, so it can be used in other battlefield applications such as directing spider mines.

Redeemer



Missile

“Even your least effective soldiers will earn a respectable bodycount with this tactical nuclear device.” So said the original brochure for the Redeemer, still unchallenged in its role as the most powerful man-portable weapon system known through the galaxy. The slow-moving but utterly devastating missile, affectionately known as “Lola” by veteran soldiers, now uses an Enhanced Radiation payload. This ensures maximum tissue failure without undue property damage, perfect for modern assault-and-capture tactics.

The Redeemer's alternate mode fires the missile using the disposable fly-by-wire guidance system, though the manual recommends using this mode only in areas of relative safety.

Weapons

Hoverboard



The reliable delivery of dismounted infantry has been a battlefield logistical issue for millennia. Vehicle factories require massive Tarydium stockpiles, and personal translocating devices quickly deplete their energy reserves on large battlefields. In response to the need for a unified transport solution, personnel can now be equipped with anti-photon Hoverboards.

The harmonic oscillation of three radiating Tarydium-fiber flywheels provides enough thrust to keep riders in their air.

Specially designed coil systems draw kinetic energy from the flywheels, powering a series of ducted fans along the underside of the board to generate forward momentum. The Hoverboard's agile design and attitude-based steering system does have one major drawback: the rider is defenseless, and any damage will usually result in a fall.

Note that the board does not perform well on low friction surfaces such as water and ice, but a magnetic grapple is provided should the rider wish to tow behind larger vehicles.

Translocator



Ammo

The Translocator was originally designed by Liandri R&D for rapid rescue of expensive mining equipment during tunnel collapses and related emergencies. The technology also saved countless lives, but not without cost; rapid deresolution and reconstitution led to synaptic disruptions, and the debilitating symptoms like Teleportation Related Dementia (TReDs).

Today, after years of lucrative military development contracts, portable teleportation technology has been declared "sufficiently safe" for regular use by front-line infantry.

Vehicles

Axon Cicada



The Axon Cicada provides versatile near-air support for both offensive and defensive operations. Dual wing-borne rotors allow for vertical takeoff and landing, hovering capability and multi-vectored propulsion. Side mounted rocket pods can be fired in quick succession to suppress a target at distance, or loaded up to 16 at a time and launched in a single volley that will home toward and annihilate its intended target. A secondary gunner position controls the underslung ball-turret plasma cannon.

The Cicada's low top speed and distinctive flight signature make it a ready target for anti-vehicle rockets, so the secondary gunner also has chaff defensive countermeasures available.

Axon Goliath

The Goliath-class tank has served the Axon infantry as a front-line offensive weapon for more than two decades. Protected by heavy RHA carbon-duranium armor, the Goliath trades speed for endurance and brute force. Four synchronized stabilizers let the turret rotate independently from the chassis, and the built-in targeting scope allows for the tracking of enemies at both medium and long range. The Goliath's main cannon delivers a massive 140mm depleted-uranium round at over 1500 meters per second. An additional gunner seat features a turret-mounted 12.7mm machine gun. Working in tandem, these two weapons provide a strong offense against both enemy infantry and vehicles.

Axon Hellbender



The Axon Hellbender is the spiritual successor to the High Mobility Multipurpose Wheeled Vehicles of the 20th century. The upgraded chassis provides strong maneuverability in the field, and the up-armored neutron panels offer moderate protection to the vehicle's occupants. The Hellbender's main strength, however, is its powerful weaponry. The rear turret focuses a devastating bolt of plasma at its target. The front-mounted shock cannon releases floating mines of unstable plasma which can be chain-ignited by the weapon's secondary fire photon beam. It is not uncommon to see a group of enemies devastated by this spectacular weapon, and it should be approached with caution.

Vehicles

Axon Leviathan



The Leviathan "super vehicle" is the ultimate expression of Axon military firepower. This behemoth is the size of a building, supported by six wheels. Each wheel is more than three meters in diameter. Infantry accessible turrets sit along the upper deck of the vehicle, strategically located near each corner to ensure maximum protection capability and shield coverage. The Leviathan's massive girth is required to support the true centerpiece of Axon weaponry. The backbone of the vehicle deploys outward and upward to expose an orbital-grade ion cannon. Powered by two quantum-fusion impulse reactors, the cannon's beam focuses to create a negative singularity at the point of impact, drawing all energy and matter out of the immediate area. This singularity explodes outward with devastating force. The resulting shockwave annihilates everything within its radius. There are documented cases of Leviathans single-handedly leveling entire cities; anything less than a full battalion assault against a fully-manned Leviathan is nothing short of suicide.

Axon Manta



Thanks to its ultra-lightweight armor and unmatched agility, the Axon IFV Manta has repeatedly proven itself on battlefields across the galaxy. The Manta is propelled by two flush-mounted, magnetically impelled fans which can be instantly pitched, allowing the vehicle to leap high into the air, then quickly duck below incoming obstacles or enemy fire. Its superior agility is paired with two multi-stage plasma casters that burn hot and reload quickly, making the Manta particularly effective in suppressing enemy infantry.

Axon Paladin



This all-terrain vehicle features a signature Projection Turret with powerful offensive and defensive capabilities that are unique to Axon design. As an offensive measure, the Projection Turret launches high-speed plasma cores at long range, which discharge on impact with a wide-area explosive force. While more than capable on the offensive side of a battle, the defensive capabilities of the Paladin are unmatched in modern warfare. The Projection Turret can also deploy a large energy shield matrix that is strong enough to completely protect the shielded area from any and all incoming fire. As a last resort measure, the Projection Turret can even launch plasma cores directly into its own shield matrix, discharging them around the entire perimeter of the Paladin with a burst of energy that is deadly to any nearby dismounted infantry.

Vehicles

Axon Raptor



The FZ-5 Raptor maintains Axon's stranglehold on air-to-ground combat superiority. A grid array of magneto-conducting cells, powered by phase-induction plasma turbines, covers its articulated wings. The grid array vectors gravity away from the Raptor in the direction the pilot chooses, enhancing mobility and giving the Raptor the ability to hover in place at will. Armed with two solidstate plasma projectors and a homing missile mount, the Raptor is effective offensively, but given the grid array's susceptibility to damage, the Raptor is best used for stealthy interdiction rather than frontal assault. Due to the vehicle's delicate nature, Raptor pilots must always be cautious of guided Longbow rockets and turret attacks from the ground.

Axon Scorpion



The Scorpion L2 buggy shows vast improvements over previous generation models. The characteristic sling blades are now forward mounted under the chassis for improved accuracy and feature a proton-charged self-sharpening edge that will cleave through all known types of body armor. The unreliable bolo mechanism has been replaced with a mortar that fires homing spheres of charged anti-matter. The tail of the vehicle has been fitted with two afterburning propulsion units capable of boosting the already nimble vehicle up to speeds over 100 KPH in less than a second. At this top speed, the fuel lines burn so hot that they can actually ignite the Tarydium in the compression chamber, causing a chain reaction that will turn the Scorpion into an explosive meteor. Some drivers have even been known to use this "flaw" as a highly effective weapon against larger, better armored targets. Luckily, the steering column has been encased within a protective carapace that will auto-release and eject the driver should such an engine meltdown occur.

Axon SPMA



This self propelled mobile artillery (SPMA) device is infamous for its ability to blanket a large area with devastating fire that falls from the sky above. The Axon Hellfire is sufficiently maneuverable to deploy its long range artillery cannon on almost any terrain. A remote camera gives its operator a bird's-eye view of the battlefield through a targeting reticule that calculates the projected area of impact in real time. The vehicle housing also incorporates a defensive shock cannon that deploys floating mines of unstable plasma which can be chain-ignited by the weapon's secondary fire photon beam.

Vehicles

Necris Darkwalker



Mounted on a tripod of nano-fueled tentacles, the Darkwalker stands imposingly tall in the battlefield, intending to strike fear into the hearts of those who oppose the Necris. Few have faced this offensive platform in battle and lived to tell the tale. Side mounted particle accelerators combine their firepower into a large sweeping beam that disintegrates anything in its path. Integrated compressor units along the underside of the vehicle release a battle cry that is as destructive as it is intimidating. The concussive blast released by the horns impairs the senses and paralyzes anyone caught below the Walker, leaving them vulnerable to fire from the secondary turret or the crushing forces of the crouching Darkwalker itself.

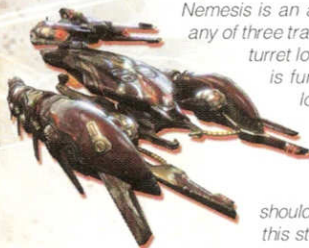
Necris Fury



This airborne terror defies all rational explanation. Nanoblack turbines seem to discount the laws of physics and ignore gravity, allowing for vertical takeoffs and mid-flight hovering. An array of tentacles mounted on the front of the vehicle pulls the Fury through the air with sudden bursts of speed and unpredictable boost maneuvers. Energy can also be funneled through the tentacles, and focused into a plasmid beam that quickly burns away enemy armor.

Necris Nemesis

The Nemesis is the unholy spawn of a mobile turret and a main battle tank. Two segmented hover treads, separated by a glowing nanocore propulsion engine, creep across any terrain in a nearly organic fashion. The centerpiece of the Nemesis is an actuated plasmid turret capable of attacking in any of three transforming configurations. When compacted, the turret locks into a forward facing position and all energy is funneled into the hover treads. This dramatically lowers the overall profile of the vehicle and allows for a great boost in speed. When fully engaged, the turret rises up to great heights, and the plasmid energy of the nanocore can be seen from great distances. Such a sight should be taken as a warning, as a Nemesis turret in this state is capable of delivering a rapid fire plasma beam with immense power and devastating accuracy.



Vehicles

Necris Nightshade



Although there have been no confirmed sightings of the Nightshade, recon teams claim to have encountered an unknown "camouflaged support vehicle" in the field. These teams describe seeing minefields and other traps materializing out of thin air in battles with the Necris. Most likely, the Nightshade is surrounded by a cloaking system that permanently bends light, similar to the temporary cloaking device that Axon Tech teams sometimes deploy to infantry captains. More research is needed, and ARC scientists would pay dearly to get their hands on this technology.

Necris Scavenger

A Necris Scavenger barreling toward—and over—its enemies is a truly fearsome sight. The Scavenger's pilot is enveloped in a sphere of modulated nanoblack that can phase-cycle across the battlefield at great speed, barreling through obstacles and crushing infantry with reckless abandon. Nano-fueled tentacles can be deployed from the central sphere in multiple configurations. When partially deployed, the tentacles spin around the central core in a whirlwind of destructive force, causing even more damage than the sphere alone. When fully deployed, the Scavenger can actually walk on the Tentacles, or use them to leap into the air and climb over any obstacles in its way. The Scavenger is always accompanied by a protective drone that is comprised of pure sentient nanoblack. When employed, the drone locks on to a target and instantly begins to deteriorate it at a molecular level, leaving nothing in its wake.



Necris Viper

The Viper is the fastest moving vehicle on any battlefield. The Viper is lightly armored and somewhat less agile than similar Axon counterparts, but it compensates for this with one of the most destructive attacks of all Necris vehicles. It can literally launch itself at a target, converting all its momentum and power into a single armor-penetrating impact. As the Viper rises into the air, two articulated stabilizers unfurl to reveal the anti-gravity fuel cell that controls vehicle movement. It momentarily hovers while it locks on to a target, then simultaneously ejects its pilot and launches itself forward with fully destructive intention. Its conventional armament includes front-mounted cannons that launch spheres of rebounding plasmid energy. They are not particularly lethal, but their high rate of fire and ability to ricochet around corners makes them effective nevertheless.



Pickups

Pickups are battlefield supplies, such as ammunition and armor. When taken, these supplies will respawn in the same location after a short period of time.

Ammunition

When weapons are spawned on the battlefield, they contain limited ammunition. Soldiers must search for additional ammunition appropriate to each weapon: Tarydium crystal shards for the Stinger, semi-stable Percussex shells, etc. Generally, additional ammunition can be found near a weapon spawn point, but this is not always the case. Ammunition is never interchangeable between weapons. To get a look at each weapon's ammunition, see *Weapons*, pgs. 24 - 27.

Armor

Armor is protective combat shielding that reduces, but does not entirely stop, damage to the wearer. Armor effectiveness is lowered each time it's damaged, until it's eventually destroyed. Armor is destroyed a single piece at a time, from most protective to least. Types of Armor:

Armor Vest

The Armor Vest covers the chest and gives 50 points of armor.



Helmet

The Helmet covers the head and gives 20 points of armor. The helmet also provides protection against additional damage from head shots.

Thigh Pads

These cover the legs and gives 30 points of armor.



Health Packs



Health

These Nanosurgeon packs work interchangeably for biological, mechanical and nanoblack soldiers. They appear in standard health packs, small health vials or a massive "Keg O' Health" that completely heals the body. Health Vials and the Keg can take the body's health beyond normal limits, making the soldier able to withstand even more punishment before an untimely death.



Powerups

Powerups provide special combat abilities. Many have a limited duration, displayed on the combat HUD. To activate a powerup, simply walk over it, and your battle armor does the rest. The powerup will later respawn in the same location after a fixed interval. Elite soldiers often mentally count down the respawn timer in order to deny enemies access to these powerful enhancements. Killed enemies will drop their Powerups, giving some benefit to those who risk facing them. The Impact Hammer's EMP mode can also be used to short-circuit powerups and drop them to the ground.

Berserk

The Berserk powerup instills you with the primal rage of a blood-soaked Skaarj warrior. The soldier's firing rate increases on all weaponry, resulting in massive damage output.



Damage Amp

The damage amplifier, known as the UDamage for its easily recognized "U" shape, boosts all weapons damage to devastating levels. The UDamage overlays a purple hue on weaponry. Each shot fired gives a keening sound, but these indicators are rarely enough to save the lives of nearby enemies.



Invisibility

The invisibility powerup invokes a powerful camouflage device, making the soldier nearly (but not entirely) invisible.



Invulnerability

The Phadyr corporation recently developed this prototype armor, which uses a modulated nanoblack shield to absorb any attack. These devices consume immense amounts of power and last for only a limited time. Without this time limitation, the Phadyr corporation would already rule the known galaxy.



Jump Boots

These boots can be used to propel the wearer to great heights. They only consume power when used, so they're limited to a number of jumps rather than a set period of time. They are activated by double-jumping.



Shield Belt

The shield belt is a powerful protective device that gives 100 points of armor, equal to an entire suit of armor pickups. The shield belt absorbs all damage, unlike armor which absorbs only part of any weapons damage.



Deployables

Deployable Devices are offensive or defensive equipment placed upon the battlefield. Some are carried by hand, while others are delivered by combat support vehicles.

EMP

The Electromagnetic Pulse Mine is used to defend against enemy armor. When an enemy vehicle comes within range of the mine's proximity sensors, the mine detonates with a single wide-area EMP burst. This pulse triggers fail-safe ejection systems on any nearby vehicles, and it also shuts down their computer systems, making the vehicles useless until they reboot.



Shaped-Charge

The shaped charge is a hand-carried detonation pack that can be used to clear battlefield obstructions, such as blockades.

Shield Generator

The shield generator creates a massive multi-faceted shield that stops all weapon fire but allows passage of soldiers and vehicles.



Spidermine Trap

When armed, this trap waits for nearby enemies and then releases a swarm of attacking, spider-like robots. The robots dig into their targets and then detonate. They're extremely dangerous in packs. The AVRIL Longbow's laser designation system can be used to guide these spider robots from the trip towards distant enemies.



Stasis Field

The technology powering this device is not entirely understood, even by the scientists who assembled the prototype. The apparent effect, though, is quite clear – the perception of time is literally bent to a crawl inside the generated field. This device is extremely effective in defense situations. It can create tactical choke points or even be used to slow assaults on Nodes or FLGs.



Credits

EPIC GAMES

Lead Designer / Lead Programmer	Steve Polge
Senior Producer	Jeff Morris
Lead Programmer (360)	Josh Adams
Programmers	James Golding, Amitt Mahajan, Matt Oelfke, Josh Markiewicz, Martin Sweitzer & Joe Wilcox
Additional Programming	Ray Davis, Jeff Farris, Rob McLaughlin, Dave Hagewood, Thomas James, Warren Marshal & Laurent Delany
Art Director	Jeremiah O'Flaherty
Lead Artist	Paul Jones
Technical Art Director	Shane Caudle
Artists	Chris Bartlett, Mike Buck, Shane Caudle, Scott Dossett, Peter Ellis, Bill Green, Matt Hancy, James Hawkins, Pete Hayes, Aaron Herzog, Jay Hosfelt, Josh Jay, Kevin Johnstone, Wyeth Johnson, Kevin Lanning, Greg Mitchell, Maury Mountain, Shane Pierce, Aaron Smith, Kendall Tucker & Chris Wells
Additional Artwork	Per Abrahamsen, Cedric Fiorentino, Chris Pema & John Sheffield
Lead Level Designers	Jim Brown & Dave Ewing
Level Designers	Ryan Brucks, Phil Cole, Stuart Fitzsimmons, Bastiaan Frank, Paul Mader, Warren Marshall, Sidney Rauchberger, Demond Rogers, David Spalinski & Mikey Spano
Additional Level Design	Cedric Fiorentino, Ken Spencer & Alan Willard
Audio Director	Mike Larson
Technical Director, Unreal Engine 3	Joe Graf
Lead Engine Programmer	Daniel Vogel
Engine Programmers	Josh Adams, Dave Burke, Mike Fricker, Wes Hunt, Keith Newton, Ron Prestenback, Andrew Scheidecker, John Scott, Scott Sherman, Niklas Smedberg, Tim Sweeney, Daniel Wright & Sam Zamani
Writing/Executive Producer	Dr. Michael Capps
Battlefield Surgeon	Rod Fergusson
Associate Producer	Tanya Jessen
Biz	Dr. Michael Capps, President Mark Rein, VP Jay Wilbur, VP Joe Babcock, Controller
Quality Assurance	Scott Bigwood
Engine Quality Assurance	Brett Holcomb, Aaron Jones & Preston Thorne
Sys Admin	Warren Schultz, Shane Smith & Woody Ent, Intern
Office Manager	Anne Dube
Special Thanks	Cliff Bleszinski, Kimberly Thompson, Jean Rochefort, Jay Andrews, Kelly Farrow, Sarah Amidon, Chris Mielke, David Zucker, Phil Robinson, Clare Turner, Lee Jacobson, Miguel Iribarren, Samuel Peterson, Ryan Gordon, Chris Norden, John Bates, Jason Page, Cort Stratton, James Wang, Rob Vawter, Bruno Matzdorf, Mark Danks, Riley Russell, Michael Sherrock, Jim Black, Roy Taylor, Leslie Pirritano, Bill Rehbock, Dan Vivoli, Eric Reichley, Greg LaBrec, Steve Englebrecht, Anna Fedorova, Alex Ruzhentsev, Olga Latyeva, Jeff Royle, Sandra Congdon & the Gears of War Team
On-Site Test Leads	Samuel "CripPleR" Gonzalez & Roger "Roger" Collum
On-Site Test Leads (360)	Andy Bayle & Ben Chaney
On-Site Testers	David DeYoung, Robert Flachotsky, Steven Haines, Randy Heimann, Nate Kelly, Elliott Walters, Krystyn H. Wells, Doug "Renz" Wilson, Josh Keller, Andy "Destrothenebro" Bayle, Eric "Poptartbandit" Duggan, John "Monquis" Elliott, Justin "Nightclucker" Hair & John "Doomface" Liberto, John Mauney, Josh Pearson, Jerry Gilland & Alex Conner
Music	Rom DiPrisco, Jesper Kyd & Kevin Riepl
Sound Design	Jamey Scott & Joey Kuras
Additional Animation	Michal Hrydziusko, Dominik Gruca, Jakub Kisiel & Tomek Zawada

Credits

TECHNICOLOR INTERACTIVE SERVICES

Director Audio Services..... Tom Hays
Casting Director..... Chris Borders
Additional Voice Direction..... Richard Epcar
Sound Recording Supervisor..... Lydian Tone
Recording Engineer..... Morgan Gerhard & David Walsh
Dialog Editor..... David Fisk & Elizabeth Johnson

EPIG GAMES CHINA

CEO..... Paul Meegan
President..... Lu Zhi Gang
Lead Environment Artist..... Liao Jun Hao
Lead Character Artist..... Kong Yuan

STREAMLINE STUDIOS

Adam Capone	Andre Stiegler
Bart Oosten	Clark Morissaint
Fabio Ilacqua	Frederik Sjplund
Henrik Bolle	Ilya Nedyal
Javier O'Neill	Jeroen Leurs
John Flannery	Lidija Filipovic
Lucas Bramlage	Marc Schweinoch
Mattias Magito	Michelle Rodriguez
Olof Strand	Renier Banninga
Robert Larsson	Ryan Keuhn
Stefan Baier	Steven Chagnon
Thomas Schmall	Wanja Svasek
Alex Huneke	David Lee
Eric Colburn	Ester Feller
Eva Koekkoek	Harpp Seble
Hector Fernandez	Manu Bains
Mike Shurtleff	Sabina Dirks
Saskia Kronenburg	Alexander Fernandez
Anethea Veenman-Hodges	Peter "Fufu Frauenwahl" Renner

SOUNDELUX DESIGN GROUP

Supervising Sound Designer & Mixing..... Scott Martin Gershin
Project Manager..... Shannon Potter
Sound Design..... Brad Beaumont, Steve Robinson, Clint Richardson, Peter Zinda, Chad Bedell,
Dutch Hill, Mark Camperell, Patrick Yocono & Candice Baldwin
Additional Mixing & Prep..... Chad Bedell & Alan Rankin
One Step Up Foley Recordings..... Foley Artist & Dan O'Connell
Foley Mixer..... John Cucci
Asset Coordinator..... Patrick Ginn
Operations Manager..... Marc Aramian
Logo Design..... Tom Szakolczay
Krall Design..... Jim Daly & Arnie Jorgensen
Environmental Concept Artists..... Feng Zhu, Vance Kovacs, John Wallin Liberto & John Dickenson

PACIFIC BEACH DIGITAL

Programming..... Daniele Gaetano, Scott Ray & Robert Young
Art/Design..... Bill Dillon & Doug Johnson

MIDWAY HOME ENTERTAINMENT / MIDWAY AMUSEMENT GAMES, INC.

Executive Producer..... Mark Caldwell
Producer..... Jerry Huber
Assistant Producer..... Adam Hanson
Technical Director..... Gary Lake

Credits

Midway Creative Services..... Yvonne Baptista, Peter Bennett, Ryan Braman, Michael Crawford, Rigoberto Cortes, Stefano Dalu, Gary Gonzales, Rare Macapayag, Jon Mongelluzzo, Sally Nichols, Jack O'Neill, Matt Schiel, Bethann Smukowski, Chris Skrundz, James Vogel, Ron White, Christa Woss & Larry Wotman

Midway Marketing

Sr. VP Marketing / CMO..... Steve Allison
VP of Marketing..... Mona Hamilton
Director of Marketing..... Tom McClure
Sr. Product Manager..... Randy Severin
Director of Channel Marketing..... Kimberly Montague
Director of Online Marketing..... Christian Munoz
Sr. Database Administrator..... Shikant Bodiya
Web Designer..... Nathan Peters

Midway Public Relations

VP of Public Relations..... Reilly Brennan
Sr. Media Relations Manager..... Natalie Salzman
Assoc. Media Relations Manager..... Sarah Moschea

Midway Home Entertainment

San Diego Quality Assurance QA Director..... Dane Kronick
QA Supervisor..... Adam Jones
QA Lead..... Eric Chow
Technical Standards Engineer..... Shana T. Bryant
TSA..... Kevin Bell, Jen Chu, David Roper, JB Sarao, Trevor Traub & Ina Yamaguchi
QA Analysts..... Justin Buell, Peter Briones, Jacob Cruz, Kyle Martin, Carl Meyers, Alex Salcedo, Ron Salaza & Steve Scott

Localization Manager

Localization Supervisors..... Clermont Matton
Localization QA Analysts..... Eric Pochat & Josh Stacy
QA Data Analyst..... Franklin Najarro, Steve Farmer, Leonardo Capezzuto & Philip Vodermeier

EDS GameQ GTO

Console QA Lead..... Srikanth S K
PC QA Lead..... Somanna PB
IQC In-Charge..... Sunil Kumar A P

QA Analysts

Console Team..... Lokesh MS, Ravi Kumar Jain, Chaitanya M Bhatt, Sri Vathsa N, Manjunatha S, Varun P, Raghavendra Shetty J & Roshan Panot
PC Team..... Vinay Krishna, Vikas Sawkar, Vikas Dwivedi, Vinay G, Pradeep P, Narayana Gawda, Ajish Cherian & Kuppa Nagendra Prasad
PC Combat Lead..... Kamalanabha N
PC Compatibility Team..... Prathap R, Prasad B & Prashanth Rai
GameQ Delivery Manager..... S Venugopal
GameQ Business Manager..... Guillaume Fournier
Program Manager..... Naveen N Belavadi

First Party Relations & Submissions..... Baki Allen, Chris Giggins, Greg Ranz, Hector Sanchez & Johanna Añonuevo

MIDWAY SPECIAL THANKS

John Stookey, Carly Yandell & Chris 'Blarg' Evans

Notes

Iester	Andrea Baker
Iron Guard male, Corrupt Robot	Steve Blum
Status Announcer	Kimberly Brooks
Othello	TC Carson
Reaper	Chris Cox
Malcolm	Greg Eagles
Lauren	Serena Irwin
Necris Female, Akasha	Mandy Kaplan
Necris male, Corrupt Robot	Nathan Lane
Iron Soul female, Iron Guard Female	James Marriot
Bishop	Nolan North
Krall	David Sobolov
Reward Announcer, Twin Souls male, Krall	Fred Tatasciore

Nathalie Spitzer	Female Announcer
Bruno Dubernat	Male Announcer
Paul Bonnet	Reaper
Sofist Rifont	Jester
Pierre Teissier	Othello
Bernard Bolla	Brat/Phy Generic Necris Male
Philippe Catolite	Phydr/Phy Generic Iron Guard Male/Lab Tech/NEG Officer
Vanina Pradier	Akasha/Generic Iron Guard Female
Pierre-Alain Juin	Matrix
Roland Timsit	Generic Corrupt Male
Virginie Mary	Lauren
Sylvain Lemarie	Scythe
Pierre Dourleins	Generic Krall
Marc Affos	Malcolm

Giò Giò Rapattino:	Female Announcer
Gerolamo Achierri:	Male Announcer
Andrea Lavagnino:	Reaper
Chiara Colizzi:	Host
Luca Della Bianca:	Othello
Alessandro Ballico:	Bishop
Domenico Strati:	Phayder/Generic Iron Guard Male/Lab Tech/NEG Officer
Ilaria Giorgino:	Akasha/Generic Iron Guard Female
Alessandro Ballico:	Necris Male
Roberto Stocchi:	Matrix
Francesco Meoni:	Generic Corrupt Male
Emanuela Amato:	Lauren
Fabrizio Russettto:	Sydney
Enrico Di Troia:	Generic Krall
Roberto Draghetti:	Malcolm

Simone Brahmman:	Female Announcer
Crock Krumblegel:	Male Announcer
Gerhard Acktum:	Reaper
Belle Scholtz:	Jester/Generic Iron Guard Female
Donald Arthur:	Othello
Borchering:	Bludge
Stefan Kolo:	Phayder
Katrin Simon:	Akasha
Nico Macuolis:	Scythe/Generic Necris Male
Soemisch:	Matrix
Kai tascher:	Generic Corrupt Male
Suzanne Medvay:	Lauren
Thorsten Muenchow:	Generic Krall/Generic Iron Guard Male/Lab Tech/NEG Officer
Diana Rauscher:	Malcolm

Ana Plaza:	Female Announcer
Rafael Torres:	Male Announcer
Carlos del Pino:	Reaper
Ana San Millán:	Jester
Pedro Tenán:	Othello
Frank Lee:	Male Announcer
Arturo López:	Phylder/Generic Male Lab/Tech/NEG Officer
F. Fernández:	Akasha/Generic Iron Guard Female
Jorge Teixeira:	Malcolm/Generic Necris Male
Alfredo Martínez:	Matrix
Jose Maria Carrero:	Generic Corrupt Male
Maria Luz Parrá:	Lauren
Guillermo López:	Scythe
Marcos Graña:	Generic Krall

MIDWAY HOME ENTERTAINMENT INC. warrants to the original purchaser of this Midway Home Entertainment Inc. software product that the medium on which this computer program is recorded is free from defects in materials and workmanship for a period of ninety (90) days from the date of purchase. This Midway Home Entertainment Inc. software program is sold "as is," without express or implied warranty damages of any kind, and Midway Home Entertainment Inc. is not liable for any losses or damages of any kind resulting from the use of this program. Midway Home Entertainment Inc. agrees for a period of ninety (90) days to either repair or replace, at its option, free of charge, any Midway Home Entertainment Inc. software product, mailed postage paid, with proof of purchase, to its Factory Service Center.

This warranty is not applicable to normal wear and tear. This warranty shall not be applicable and shall be void if the defect in the Midway Home Entertainment Inc. software product has arisen through abuse, unreasonable use, mistreatment or neglect. THIS WARRANTY IS IN LIEU OF ALL OTHER WARRANTIES AND NO OTHER REPRESENTATIONS OR CLAIMS OF ANY NATURE SHALL BE BINDING ON OR OBLIGATE Midway Home Entertainment Inc. ANY IMPLIED WARRANTIES APPLICABLE TO THIS SOFTWARE PRODUCT, INCLUDING WARRANTIES OF MERCHANTABILITY AND FITNESS FOR A PARTICULAR PURPOSE, ARE LIMITED TO THE NINETY (90) DAY PERIOD DESCRIBED ABOVE. IN NO EVENT WILL MIDWAY HOME ENTERTAINMENT INC. BE LIABLE FOR ANY SPECIAL, INCIDENTAL, OR CONSEQUENTIAL DAMAGES RESULTING FROM POSSESSION, USE OR MALFUNCTION OF THIS Midway Home Entertainment Inc. SOFTWARE PRODUCT.

Some states do not allow limitations as to how long an implied warranty lasts and/or exclusions or limitations of incidental or consequential damages so the above limitations and/or exclusions of liability may not apply to you. This warranty gives you specific rights, and you may also have other rights which vary from state to state.

Midway Home Entertainment Inc.
Technical / Customer Support
10755 Scripps Poway Parkway, Suite 615
San Diego, CA 92131

Technical Support: 858-790-3900
Toll-Free: 800-287-2404
Fax: 858-790-3840
10am to 6pm (Pacific)
Hints Line: 866-588-GAME (4263)
Web support: <http://support.midway.com>

Unreal Tournament 3 © 1998-2008, Epic Games, Inc. ALL RIGHTS RESERVED. Epic, Epic Games, Unreal, Unreal Tournament, the Circle-U logo, the Unreal Tournament 3 logo and Gears of War are trademarks or registered trademarks of Epic Games, Inc. in the United States of America and elsewhere. MIDWAY and the Midway logo are registered trademarks of Midway Amusement Games, LLC. Used by permission. Uses Blink Video. Copyright © 1997-2006 by RAD Game Tools, Inc. Zlib Copyright © 1995-2005 Jean-loup Gailly and Mark Adler. PhysX by AGEIA - Copyright © 2004-2008. Distributed under license from Epic Games, Inc. by Midway Home Entertainment Inc. Microsoft, Xbox, Xbox 360, Xbox LIVE, and the Xbox logos are trademarks of the Microsoft group of companies and are used under license from Microsoft.